

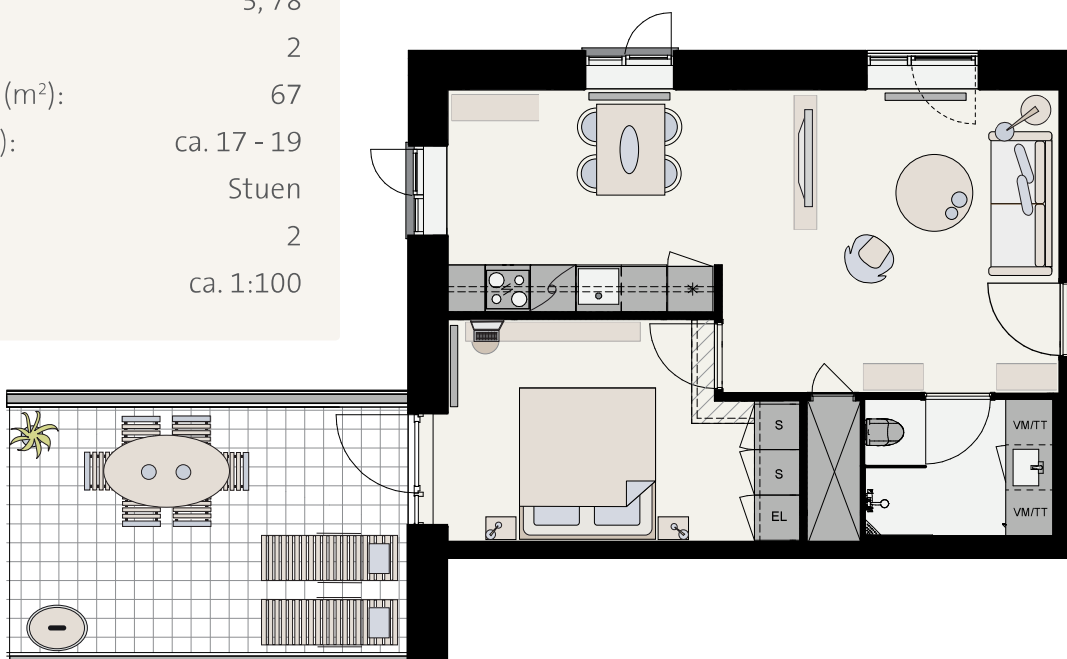
# Oresund Park - Bygning A

Type A - stueetage

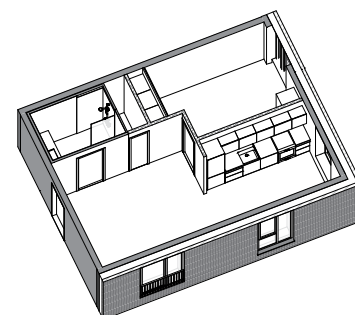
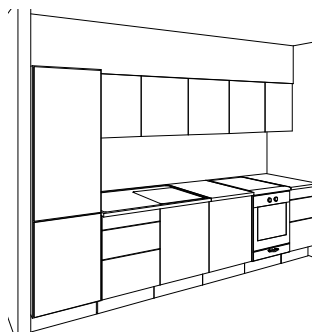
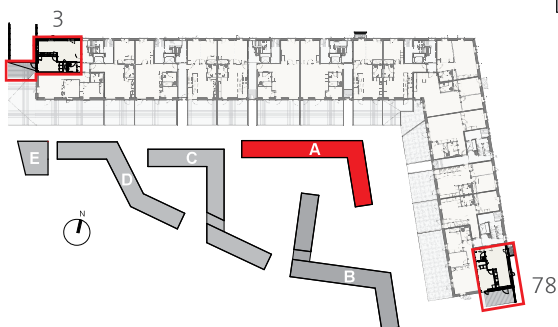
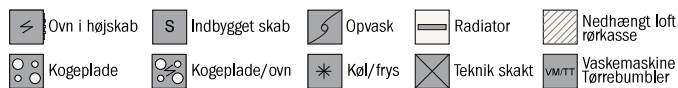
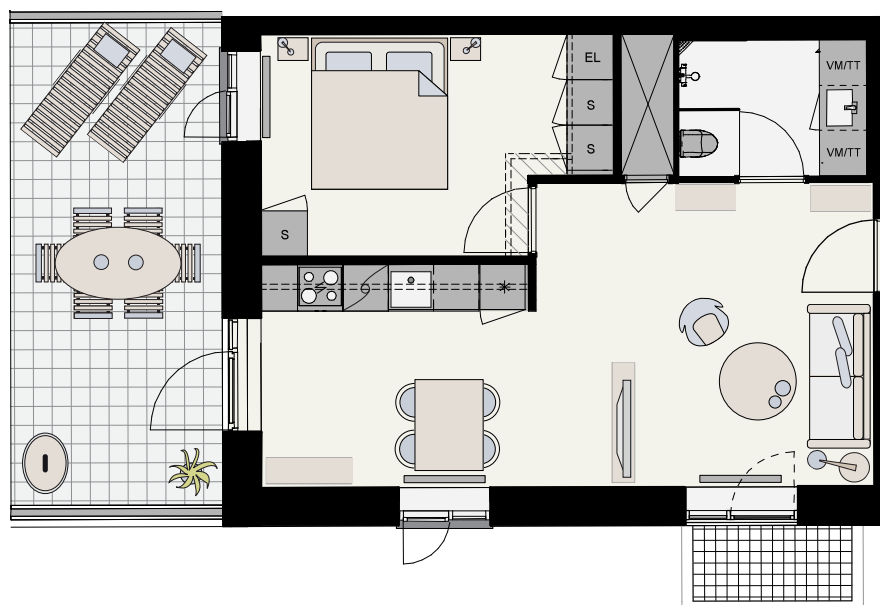
BALDER

Nr.: 3, 78  
Antal rum: 2  
Brutto areal (m<sup>2</sup>): 67  
Terrasse (m<sup>2</sup>): ca. 17 - 19  
Etage: Stuen  
Antal: 2  
Mål: ca. 1:100

Bolig nr. 3



Bolig nr. 78 er spejlvendt



Der forekommer variationer i vindues-, altan- og radiatorplacering mellem boliger af samme type

Der forbeholdes ret til ændringer og justeringer

Udlejes gennem EDC Poul Erik Bech, tlf. xxxx xxxx

balder.dk